

# Test benches for water meters

---



**ELECTRONIC TEST BENCHES FOR WATER METERS  
VERIFICATION TYPE M AND G**



Test benches of this type are used for verification of water meters and flow meters sizes DN 15÷300 mm with warm or cold water in flow range 0,005 ÷ 2000 m<sup>3</sup>/h. This test benches can be done by various versions with diverse level of automation and comfort of control and measurement, however they are assigned mainly for the verification with the flying start/stop method. The design of test benches M and G types respects all international standards and recommendations for water meter verification, respecting user's needs. Whole system is controlled by computer with graphic visualisation of process on the display.

### Technical description :

The equipment consists of following main parts:

**1. Water supply** consisting of vessel, pumps (heating), and accessories needed for providing the whole flow rate range.

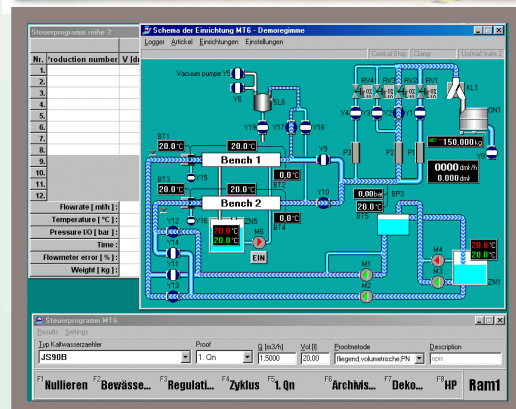
**2. Fixing table** ensuring fixing of set of water meters at one (type G), two or four (type M) clamping rows, which can be connected serial or parallel.

**3. Regulating part** assuring the adjusting of flow rates and **standard balances** with diverters for estimation of over flow volume.

**4. The modern, quality control and evaluation system**, which controls complete testing process through the easy manageable control software is the quality top of whole equipment.

There is provided graphically the visualisation of whole testing circuit inclusive projection of water flow and all parameters at the display. The particular tests run automatically according the parameters of water meters, which can be easy pre-defined into the database.

The test's results can be recorded and printed, all measured values are stored and any export to other files is possible (for example to DBF, XLS, TXT and other), the system can be easy connected to the network.



### Technical parameters:

Version	M	G1	G3	G4/G5
Flow rate range	0,005 ÷ 20 m <sup>3</sup> /h	0,005 ÷ 30 m <sup>3</sup> /h	0,03÷120 m <sup>3</sup> /h	0,05÷2000 m <sup>3</sup> /h
Minimal accuracy	0,2 %			
Temperature of testing medium	15 ÷ 55 / 85 °C			
Amount of clamping rows	1, 2 or 4		1	
DN of verified meters	DN15 - 40	DN15 - 65	DN25 - 100	DN50 – 300
Thermometer	Pt 100, accurate class 1/3 B, with correction of graphics			